

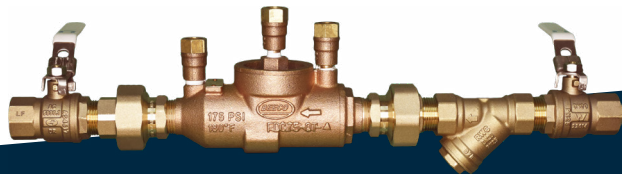
INSTALLATION REQUIREMENTS

Backflow prevention devices are to be installed in accordance with National Construction Code Vol. 3, AS/NZS 3500.1, the manufacturer's specifications and local authority requirements.

Heat must not be applied to any device.

Line strainers are to be installed immediately upstream of a device (except in fire services).

Resilient seated isolating valves are to be installed at each end of a device.



All pipe work is to be flushed prior to installation.

Bypasses without protection must not be installed around a device.

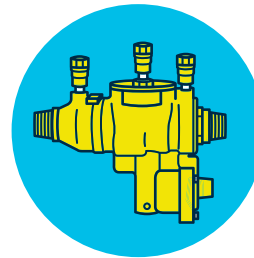
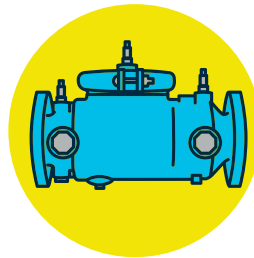
Where supply cannot be interrupted, a parallel installation is required.

Vent ports must be positioned to allow vision of discharge.

STANDARDS APPROVED

RWC is the Australian distributor for the RWC BEECO Backflow range of valves.

RWC BEECO Valves are the premier choice for backflow in the Australian plumbing marketplace. With a complete range of BEECO Valves from RPZD backflow preventers, dual check valves, hose connection vacuum breakers to double check valves, RWC BEECO Valves are the leader in backflow prevention.



BACKFLOW PREVENTION



Contents of this brochure are subject to change, please visit our website for most up-to-date product information.



☎ 1800 810 803 🌐 rmc.com.au
✉ sales.au@rwc.com

27-28 Chapman Place,
Eagle Farm QLD 4009, Australia

WHAT IS BACKFLOW?

Backflow is the term used to describe the reverse flow of potential contamination entering potable water supply.



BACKFLOW PREVENTION

While there are several ways to prevent both back siphonage and back-pressure causing backflow, the most efficient, economical and safest is the correct application of an appropriate mechanical backflow prevention device.

RWC BEECO Valves offer a complete range of backflow prevention devices. The company also has the local presence and necessary expertise to advise on the correct selection, application, installation and service from within this range to meet the requirements of specific circumstances.

HAZARD RATINGS

LOW HAZARD

Any condition, device or practice which, in connection with the water supply system, would constitute a nuisance but not endanger health or cause injury.

MEDIUM HAZARD

Any condition, device or practice which, in connection with the water supply system, has the potential to endanger health.

HIGH HAZARD

Any condition, device or practice which, in connection with the water supply system, has the potential to cause a serious health hazard or death.

LEVELS OF PROTECTION

INDIVIDUAL PROTECTION

Backflow prevention provided at individual fixtures.

ZONE PROTECTION

Backflow prevention provided at the connection to specific sections of the water supply system within a building.

CONTAINMENT PROTECTION

Backflow prevention provided at the property boundary to protect the Authority's water supply from contamination.

INSTALLATION LOCATION

Devices must not be located in a corrosive or polluted environment.

Devices must be readily accessible for maintenance and testing. Devices must not be located in ceilings or in areas without permanent standing space.

Devices must not be buried underground.

Vented or testable devices must not be located in pits unless permitted by the regulatory authority.

Where water hammer is occurring, surge protection (pressure reducing valve) or water hammer arrestors must be installed.

Devices must not be subject to flooding.

Devices must not be subject to extreme heat.

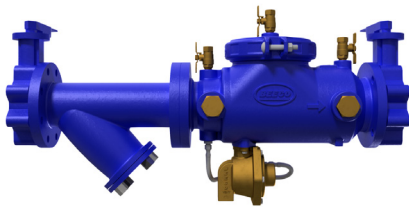


REDUCED PRESSURE ZONE DEVICES



RPZD Backflow Preventers 15mm – 50mm

Device Only	Complete with Lockable Ball Valves	Size
RPZX15	RPZX15C	15mm
RPZX20	RPZX20C	20mm
RPZX25	RPZX25C	25mm
RPZX32	RPZX32C	32mm
RPZX40	RPZX40C	40mm
RPZX50	RPZX50C	50mm



RPZD Backflow Preventers 65mm –150mm

Device Only	Complete	Size
RPZX65	RPZX65C	65mm
RPZX80	RPZX80C	80mm
RPZX100	RPZX100C	100mm
RPZX150	RPZX150C	150mm

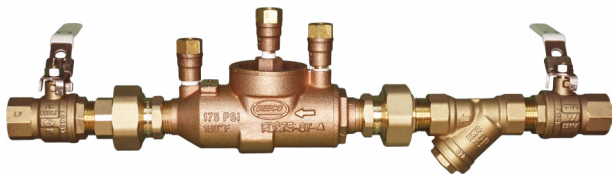
REPAIR KITS



RPZD Repair Kits

Size	Relief	1st Check	2nd Check	Rubber Kit
15–20mm	RVP-1	CH1B-1	CH2A-1	RPZ-RK1
25mm	RVP-1	CH1B-2	CH2A-2	RPZ-RK2
32–50mm	RVP-2	CH1B-3	CH2A-3	RPZ-RK3
65–100mm	RVP-3	CH1B-5	CH2A-5	RPZ-RK5
150mm	RVP-3	CH1B-6	CH2A-6	RPZ-RK6

DOUBLE CHECK VALVES



Double Check Valves 20mm – 50mm

Device Only	Complete with Lockable Ball Valves	Size
DCVX15	DCVX15C	15mm
DCVX20	DCVX20C	20mm
DCVX25	DCVX25C	25mm
DCVX32	DCVX32C	32mm
DCVX40	DCVX40C	40mm
DCVX50	DCVX50C	50mm



Double Check Valves 65mm – 150mm

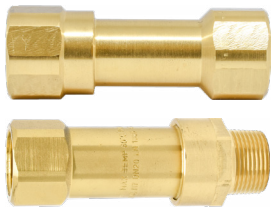
Device Only	Complete	Size
DCVX65	DCVX65C	65mm
DCVX80	DCVX80C	80mm
DCVX100	DCVX100C	100mm
DCVX150	DCVX150C	150mm



DCV Repair Kits

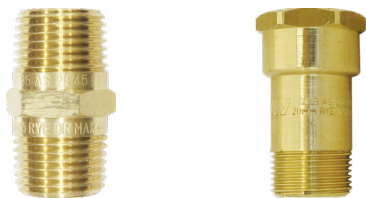
Size	1st & 2nd Check	Rubber Kit
15–20mm	CH2A-1	DCV-RK1
25mm	CH2A-2	DCV-RK2
32–40mm	CH2A-3	DCV-RK3
50mm	CH2A-3	DCV-RK4
65–100mm	CH2A-5	DCV-RK5
150mm	CH2A-6	DCV-RK6

DUAL CHECK VALVES



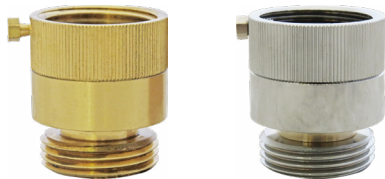
No. 7 Dual Check Valves 15mm – 40mm

DCX17	15mm Hi Temp M x F
DCX05	20mm F x F
DCX09	20mm F x M
DCX12	25mm F x F
DCX13	25mm F x M
DCX14	32mm F x F
DCX16	40mm F x F



Mini Dual Check Valves 15mm – 20mm

DCX04	15mm M x M
DCX03	15mm M x M – Chrome
DCX02	15mm M x F
DCX01	15mm M x F – Chrome
DCX07	20mm M x F to suit ½” hose taps



Hose Connection Vacuum Breakers 20 – 25mm

DCX18	20mm
DCX19	20mm – Chrome
DCX20	25mm
DCX21	25mm – Chrome

BACKFLOW KITS



Backflow Device Test Kits

7190	Backflow Device Test Kits
------	---------------------------

SINGLE & SINGLE DETECTOR CHECK VALVES



Single & Single Detector Check Valves 100mm – 150mm

Single Check	Single Detector Check with Bypass Meter	Single Detector Check with Meter Spacer
SCT100	SDCT100-20WM	SDCT100-25S
SCT150	SDCT150-20WM	SDCT150-25S
	SDCT100-25WM	
	SDCT150-25WM	

DOUBLE DETECTOR CHECK VALVES



Double Detector Check Valves 80 – 150mm

Size	Device	Device with Water Meter	Device with G.O. Butterfly Valves
80mm	DDC80	DDC80-WM	DDCGB80-WM
100mm	DDC100	DDC100-WM	DDCGB100-WM
150mm	DDC150	DDC150-WM	DDCGB150-WM

KITS



Quick Connect Kits

7190QC	Quick Connect Kits
--------	--------------------



Quick Connect Swivel Coupling Kits

7190SK	Quick Connect Swivel Coupling Kits
--------	------------------------------------



Quick Connect Bush Adaptor Kits

7190AK	Quick Connect Bush Adaptor Kits
--------	---------------------------------