

CONTENTS:

2x HT1316-1 (HT VALVE INSULATOR LEFT)

2x HT1316-2 (HT VALVE INSULATOR RIGHT)

1X MX2691_A (MIX VALVE INSULATOR HALF
PIECE LEFT)

1X MX2691_B (MIX VALVE INSULATOR HALF
PIECE RIGHT)

10 x CABLE TIES

1x IS1178 (INSTALLATION INSTRUCTIONS)

Reliance Worldwide Corporation
(Aust.) Pty. Ltd.
ABN 71 004 784 301
27-28 Chapman Place,
Eagle Farm, Qld Australia 4009

Customer Service

AU 1800 810 803
NZ 0800 800 523
sales.au@rwc.com
sales.nz@rwc.com
www.rmc.com.au



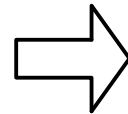
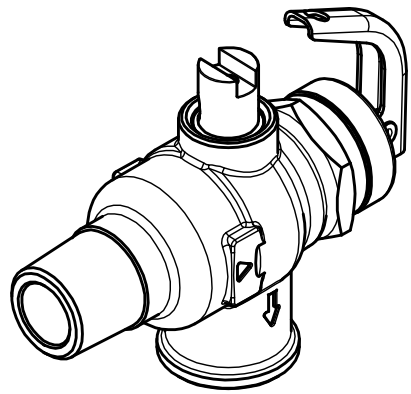
INSULATION KIT HT/MIX PRODUCTS (VC961)

Suitable for RMC HX / HTX / MIX15X Valves

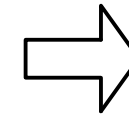
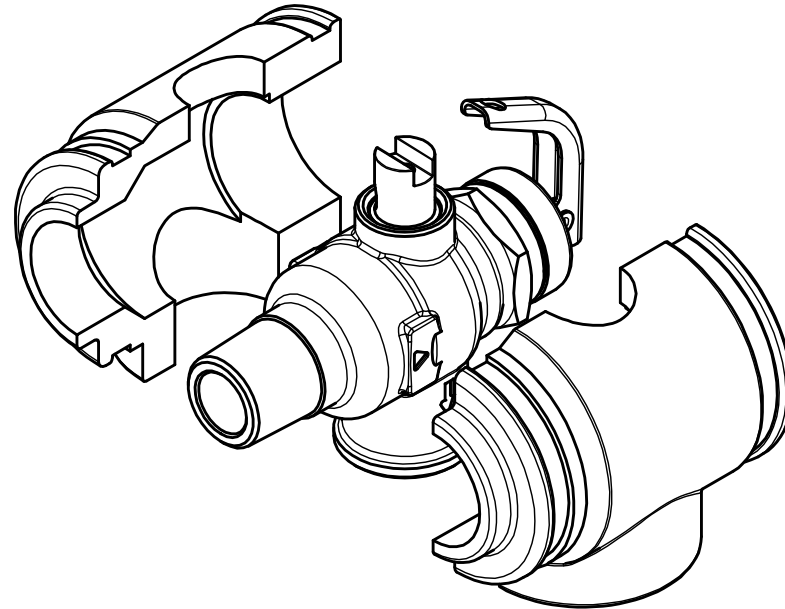
IS1178 REV - August 2025 (ECO-011916)

HOW TO INSTALL VALVE INSULATION

1 EXPANSION CONTROL VALVE



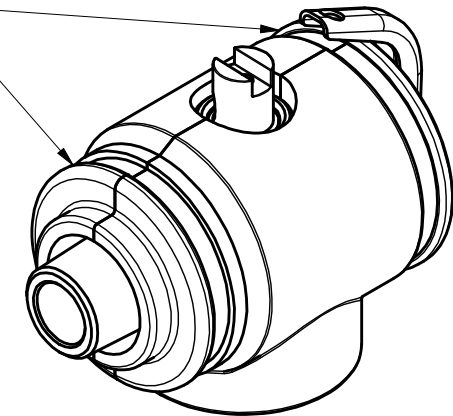
2 FIT 2 PIECES OF EXPANSION VALVE INSULATION AROUND VALVE



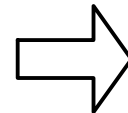
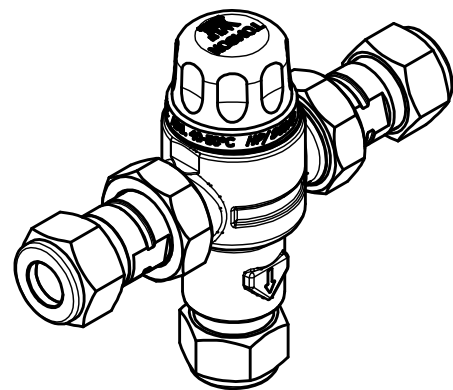
3 SECURE INSULATION BY WRAPPING THE SUPPLIED ZIP-TIES AROUND THE GROOVES AS INDICATED BY ARROWS

NOTE: Lift lever to check operation of valve and then ensure that the lever returns to the closed position

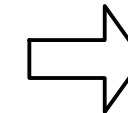
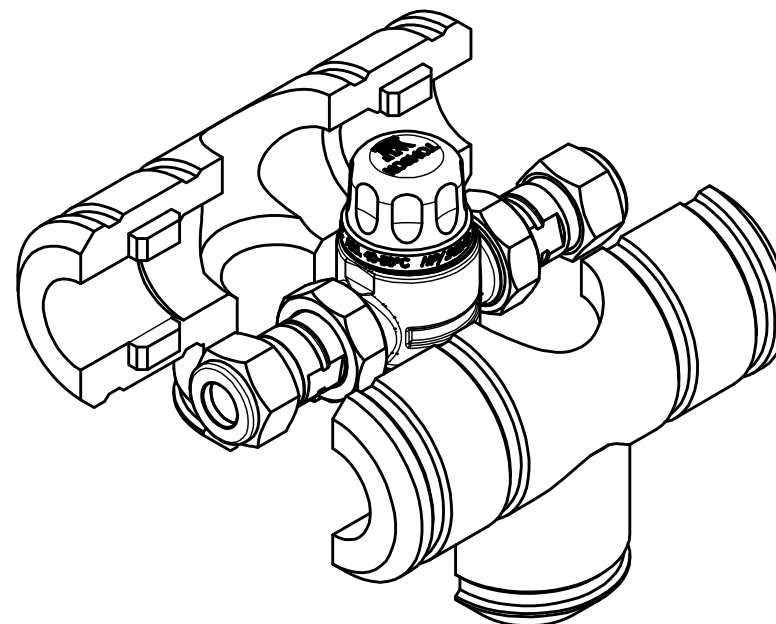
ZIP TIES



1 MIX VALVE

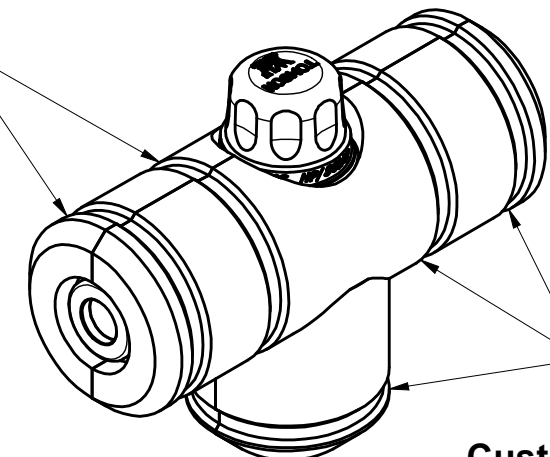


2 FIT 2 PIECES OF MIX VALVE INSULATION AROUND VALVE



3 SECURE INSULATION BY WRAPPING THE SUPPLIED ZIP-TIES AROUND THE GROOVES AS INDICATED BY ARROWS

ZIP TIES



ZIP TIES