

## Troubleshooting

Check the LED lights status.

### LED solid light on status 1 and 3

- Indication that the valve position is closed. If there is an alarm, then there is a presence of water at an unsafe level detected by the control sensor box. Device will alarm for a maximum of 2 minutes and will shut off the valve preventing further damage to the property. Connecting to the auxiliary power source will allow the device to alarm continuously until stopped.



### To Stop Alarm

Press the OPEN button once and make sure the device is free from water. Check that water flow has been re-established.

### LED flashing light on status 1 and 2

- Batteries require changing immediately.



### LED flashing light on status 1, 2 and 3 every 15 seconds

- Device is powered on and batteries are at an acceptable level of charge.



Reliance Worldwide Corporation reserves the right to modify designs and specifications and to withdraw and introduce products at any time without notice.

Installation is subject to the requirements of the applicable regulatory authority, the National Construction Code Volume Three – Plumbing Code of Australia, associated reference standards as applicable at the time and AS/NZS 3500. For further Scope of Use, please visit [www.rmc.com.au/resources](http://www.rmc.com.au/resources).

Reliance Worldwide Corporation (Aust.) Pty. Ltd. (RWC) will either replace or repair any defective goods where the defect arose as a result of manufacture within the warranty period. You may contact RWC at the phone number, address or e-mail shown and will be required to return the goods for evaluation. Should the defect be found to be one of our manufacture we will send you a replacement product to your stated address at our expense. Our goods come with guarantees that cannot be excluded under Australian Consumer Law. You are entitled to a replacement or refund for a major failure and for compensation for any other reasonably foreseeable loss or damage. You are also entitled to have the goods repaired or replaced if the goods fail to be of acceptable quality and failure does not amount to a major failure.

® = Registered Trade Mark of Reliance Worldwide Corporation

© 2025 All rights reserved

ISI150 REV A

Failure to comply with all aspects of these instructions may result in unsafe performance.

RMC Leak Protection devices must be installed in accordance with AS/NZS 3500.4, WMTS-476, the manufacturer's specifications, and local authority requirements.

All installations must be carried out by a licensed plumber.

## Installation Instructions



### Component List

- 1 × Control Sensor Box (2x AA batteries pre-installed)
- 1 × Motorised Valve
- 1 × 5V Backup Power Adaptor (AU)

## LPV15X

Leak Protection Valve for Nominal Size:  
DN15

1800 810 803

sales.au@rwc.com

rmc.com.au

1800 062 669

27-28 Chapman Place, Eagle Farm QLD 4009, Australia



RMC Reliance Valves is a division of  
Reliance Worldwide Corporation (Aust.) Pty. Ltd.  
ABN 71 004 784 301



**W**  
Lead Free  
WMTS476:2016  
WMK26899

## Scope

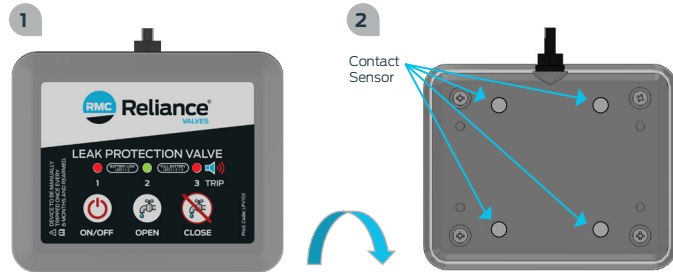
- Electronic leak detection for use with heated water system installations utilising a safe tray.
- Non-directional flow.
- Suitable for tight spaces.
- Installation up to 1200mm at any angle from base of safe tray.
- For single storage hot water systems only.

## Checking

Inspect all components before use and installation.

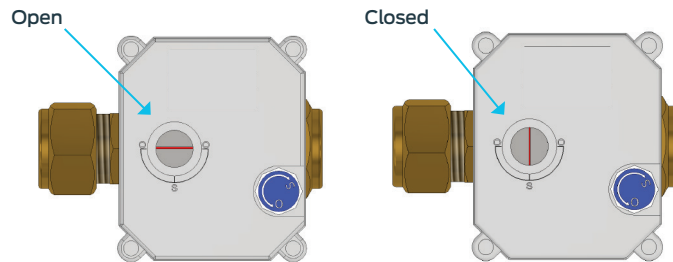
### Control Sensor Box

- Connect the 2-Pin waterproof connectors from Control Sensor Box to the MOTORISED VALVE.
- Batteries are pre-installed with optional auxiliary power adapter to enable a continuous alarm when the device is activated.
- Press the ON/OFF once until a BEEP is heard. The device will default to the SHUT OFF / CLOSED position.
- Press the OPEN button to open the valve.
- Activate the alarm by placing 2 of the 4 brass contacts of the control box on a wet surface. Valve will shut off to CLOSED position.
- Press the OPEN button to reset the alarm and valve will open.



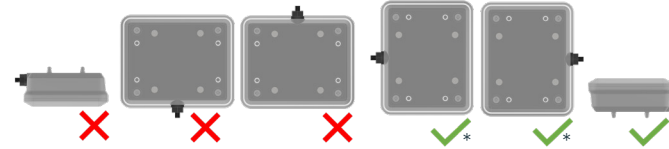
### Motorised Valve

- Making sure everything is connected and powered ON.
- Pressing the OPEN button on the Control Sensor Box will rotate the clock red line to 'O' position (OPEN).
- Pressing the CLOSE button on the Control Sensor Box will rotate the clock red line to 'S' position (SHUT OFF).



## Installation Instructions

1. The RMC Leak Protection Valve shall be installed in an accessible location to facilitate removal for servicing and may be installed either horizontally or vertically. Suitable clearance is required, to enable the removal of the RMC Leak Protection Valve for maintenance.
2. Upstream pipeline shall be flushed to remove foreign material before installing the unit. Do not allow thread tape to overhang threaded connections.
3. When installing, apply spanners to body flats only and do not over-tighten.
4. Ensure the Control Sensor Box is placed flat on the base of the safe tray with the interfacing panel visible and orientated correctly.  
\*If space is limited.



### Initial Setup

1. After installation press the ON/OFF button until a BEEP is heard, and the LED status light is on. The unit will default to SHUT OFF position.
2. Press the OPEN button to ensure the valve is an open position, an audible noise will be heard, and a green LED light will flash.
3. Make sure the water is flowing to the hot water heater by checking the water flow.

### Testing

- The RMC Leak Protection Valve should be tested every 6 months.
- Battery is to be replaced once a year or when the low battery indicator flashes.
- If system fails, call a licensed plumber, isolate the water supply at the isolation valve and shut off the power supply to the hot water system.

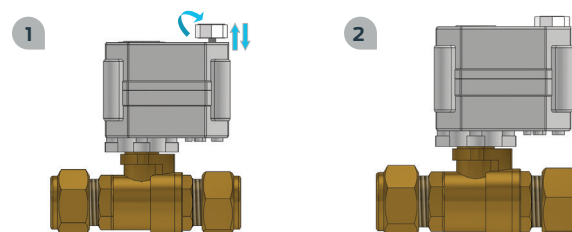
### Verifying the working conditions

1. Place the Control Sensor Box onto a wet surface and verify that the valve has isolated flow to the hot water system.
2. Remove all liquid from the Control Sensor Box and press OPEN to reset to open position.
3. Check for water flow to the hot water system.

## Manual Override

The RMC Leak Protection Valve can be manually overridden when there is no power to the device.

1. Pull the white knob to up position to engage the manual override gear on the Motorised Valve.
2. Clockwise to close position.
3. Anti-clockwise to open position.
4. Push the white knob to down position to disengage the manual override gear.



## Replacing Batteries

1. Make sure the device is OFF by pressing the ON/OFF and is not connected to the auxiliary mains power supply. Detach the waterproof connector to the valve if required.
2. Using a screwdriver, remove the 4 screws behind the control unit.
3. Replace 2x AA batteries.
4. Replace lid and tighten the 4 screws. To ensure that moisture does not enter the unit, place the lid back to original position ensuring that it is free from debris.
5. Press the ON/OFF until beep to power ON the unit.
6. Press the OPEN button to open the valve until an audible sound is heard.

