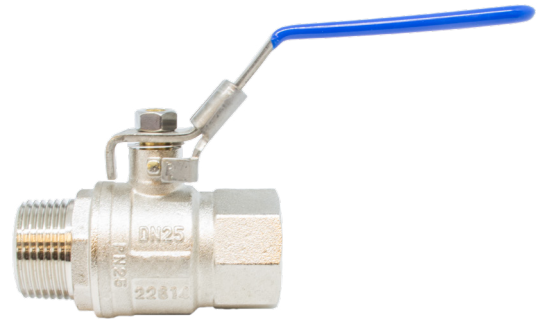


Water Service Ball Valves - Water Approved

Scope of Use / Specification Sheet

The RMC Reliance Valves ball valve range is a proven industry leading design and is available in sizes ranging from 15mm to 50mm. The range is WaterMark Lead Free certified and suitable for use in potable water applications.



BVX2506

Product List

Order Code	Description
BVX1506	15mm MI x 15mm FI Water Service Ball Valve
BVX2006	20mm MI x 20mm FI Water Service Ball Valve
BVX2506	25mm MI x 25mm FI Water Service Ball Valve
BVX3206	32mm MI x 32mm FI Water Service Ball Valve
BVX4006	40mm MI x 40mm FI Water Service Ball Valve
BVX5006	50mm MI x 50mm FI Water Service Ball Valve

All above listed Ball Valves are lockable.

Features and Benefits

- Forged Lead Free DZR Brass Body
- Bottom loading, dual O-Ring sealed stem
- Resilient seats
- In-line, full bore design minimises pressure loss
- Lockable in either open or closed position
- Quality guaranteed WaterMark Lead Free certified product

Installation Conditions

Working Temperature Range	0°C to 60°C
Maximum Working Pressure	2500kPa
Medium	Water
Handle Colour	Blue

Standards and Approvals



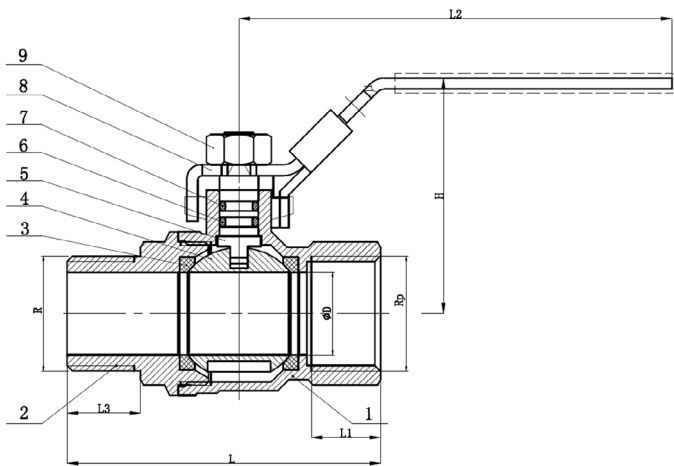
Lead Free

AS 5830.1
WM-022614

Water Service Ball Valves - Water Approved

Dimensions							
Model	Size	L	L1	L2	L3	ØD	H
BVX1506	1/2"	66	16	100	17	14.8	50
BVX2006	3/4"	73.4	17	100	17	19	53
BVX2506	1"	84.6	20	125	19	24	64.3
BVX3206	1 1/4"	102.5	21.4	135	22	32	71.5
BVX4006	1 1/2"	112.3	22.5	140	23	40	78.5
BVX5006	2"	132.6	27	140	27	50	86.5

- Notes:**
1. All measurements in mm unless otherwise stated.
 2. Male end connection: R series tapered external thread.
 3. Female end connection: RP series parallel internal thread.



Materials		
1	Body	C46500
2	Bonnet	C46500
3	Seat	PTFE
4	Ball	C46500
5	Stem	C46500
6	O Ring	NBR
7	O Ring	HNBR
8	Lever	SS304
9	Lever Nut	SS304

Installation

Installation is subject to the requirements of the applicable regulatory authority, the National Construction Code Volume Three – Plumbing Code of Australia, associated reference standards as applicable at the time and AS/NZS 3500. This product is compliant to the Lead Free requirements of the National Construction Code Volume Three. For further Scope of Use, please visit www.rmc.com.au/resources.

Warranty

Reliance Worldwide Corporation (Aust.) Pty. Ltd. (RWC) will either replace or repair any defective goods where the defect arose as a result of manufacture within the warranty period. You may contact RWC at the phone number, address or e-mail shown below for further information or to make a claim.

Visit www.rmc.com.au/warranty to view the warranty statement in full and for further important information.