

# Endurance Multijet 20-25mm Turbine Meter

## Scope of Use / Specification Sheet

The RMC 20 - 25mm Endurance Multijet Turbine Meter is a robust device for use by water authorities operating water supply networks on a user pays basis.



WM273MRP

### Product List

Order Code	Description
WM273MRP	20mm DC Meter Thread
WM274MRP	20mm DC NSW Thread
WM275MRP	20mm DC BSP Thread
WM270MRP	25mm DC NSW Thread
WM271MRP	25mm DC Meter Thread
WM272MRP	25mm DC BSP Thread

*Reed Switch WM598 required for pulse output*

### Materials

Body/H Ring	DZR Brass
Reading Face	Polycarbonate
Counter Mechanism	Polystyrol
Check Valve	Acetal

### Application

The RMC Endurance Multijet Turbine Water Meter is suited for internal and external use. The product is certified for use in the horizontal plane, with the dial facing upwards. Flow direction is indicated by the arrow on the meter body and must be observed during installation. For ease of servicing, it is recommended that an isolating valve be installed before the meter.

*Cold water application only.*

### Features and Benefits

- Encapsulated reading face prevents fogging and discolouration from trapped particulate in the metered water supply
- Low friction mechanism
- Higher mechanical durability and inherent resistance to choking as a result of large port clearances
- Long term meter accuracy
- Essential for maintaining charging equity
- Economical metering option
- Extended service life provides significant long term cost savings for Water Authorities
- Direct drive mechanism
- No magnetic coupling protects device from magnetic interference
- Pulse capable
- Optional reed switch allows remote reading without breaking the meter seal
- Internal non-return valve and strainer
- Metrological Certification – NMI Approval

### Installation

Installation is subject to the requirements of the applicable regulatory authority and AS/NZS 3500.1.

### Standards and Approvals



AS 3565.1  
WMK001881

- Approved to NMI R49

# Endurance Multijet 20-25mm Turbine Meter

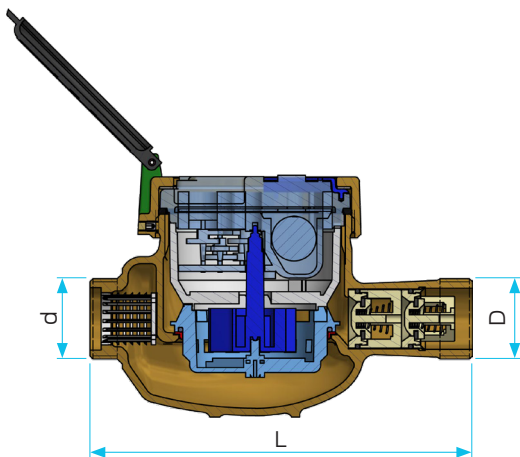
## Performance Specifications

	DN20	DN25
Overload Flow Rate (Q4)	5 kL/h	7.9 kL/h
Permanent Flow Rate (Q3)	4 kL/h	6.3 kL/h
Transition Flow Rate (Q2)	32 L/h	64 L/h
Minimum Flow Rate (Q1)	20 L/h	40 L/h
Minimum Registration Flow Rate	5 L/h	7 L/h
Pressure Loss	70 kPa @ 2.5 kL/h	73 kPa @ 3.5 kL/h
Strainer	Total area: 1395 mm <sup>2</sup> Hole size: 2.0x2.0 mm	Total area: 2200 mm <sup>2</sup> Hole size: 2.0x2.0 mm
Accuracy	Q1 to Q2 Q2 to Q4	± 5% ± 2%

## Dimensions

	DN20		DN25	
	Meter	NSW	Meter	NSW
Body Thread (D)	Meter	NSW	Meter	NSW
Body Length (L)	154	152	178	173
Connector Thread (d)	R3/4"		R1"	
Width	90		105	
Weight (without connectors)	1.4 kg		1.8 kg	
Weight (with connectors)	1.9 kg		2.5 kg	

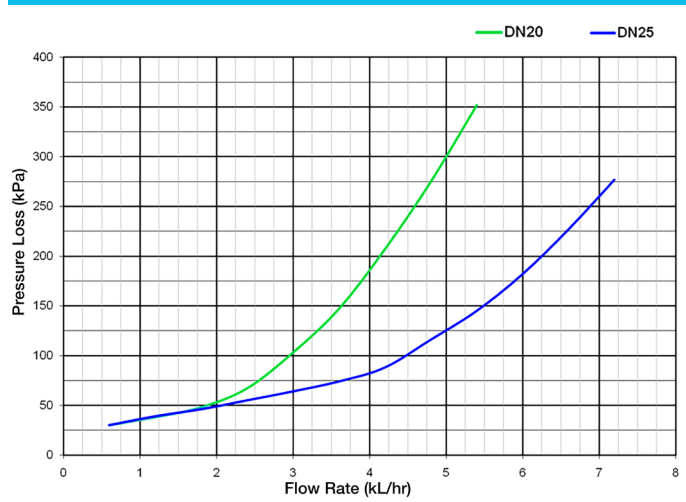
Note: All measurements in mm unless otherwise stated.



## Technical Specifications

Meter Type	Multijet
Drive Type	Direct, not susceptible to magnetic interference
Register Type	Roller-Protected Counter Maximum Reading: 99,999 kL Minimum Reading: 0.5 L Leak Detection: Wheel
Indicator Type	Digital Indicators (black) = kilolitres Pointer Wheels (red) = sub-multiples
Pulse Output Option	1 pulse per 10 L
Maximum Working Pressure	1400 kPa
Integral Non-Return Valve	Yes – dual check valve to AS 2845.1
Maximum Working Temperature	30°C
Maximum Operating Temperature	50°C

## Flow Characteristics



## Warranty

Reliance Worldwide Corporation (Aust.) Pty. Ltd. (RWC) will either replace or repair any defective goods where the defect arose as a result of manufacture within the warranty period. You may contact RWC at the phone number, address or e-mail shown below for further information or to make a claim.

Visit [www.rmc.com.au/warranty](http://www.rmc.com.au/warranty) to view the warranty statement in full and for further important information.