

Woltman - Industrial Water Meter ISO

Scope of Use / Specification Sheet

The Arad Woltman Silver Turbo is a durable and versatile water meter suitable for use in a wide variety of applications.

Product Code	
Model	Catalogue Number
50mm	WM500WST
65mm	WM650WST
80mm	WM800WST
100mm	WM1000WST
150mm	WM1500WST

Technical Specifications	
Maximum Working Pressure	Standard – 16 bar
Maximum Water Temperature	60°C
Connection	Flanges according to ISO, BS 10, ANSI 150 or others
Register	IP68
Output	Dry contact reed switch - 10L/pulse (included)

Materials	
Body	Cast iron, epoxy coated

Standards and Approvals	
<ul style="list-style-type: none"> NMI R49 Approved utility use only. No WaterMark 	

Application	
<p>The Woltman Meter is ideal for water supply networks, agricultural applications and industrial use. The water meter may be installed in any position. For vertical positions the flow will be upwards. The meter must be full of water while operating. Prior to installation of a meter, the pipeline should be thoroughly flushed. Straight pipe sections with the same diameter (D) as the meter, having lengths of 5D and 2D, should be installed upstream and downstream of the meter respectively.</p>	



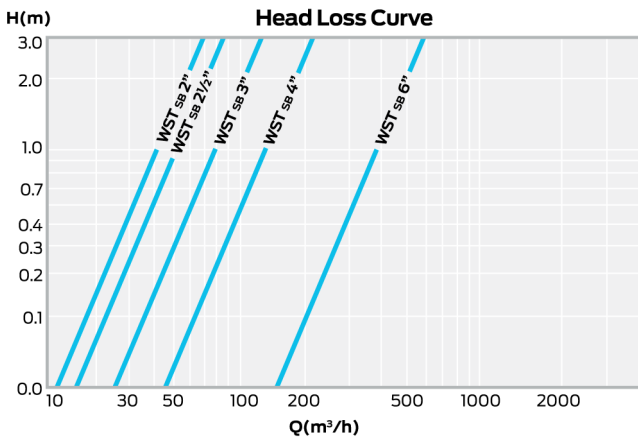
WM500WST

Features and Benefits	
<ul style="list-style-type: none"> The Woltman has a wide measuring rate that enables it to serve in broad applications and in extreme situations (low flows and high flows) No sensitivity to working conditions ie. vibrations No sensitivity to humid conditions (even if dry chamber is full of water) Resistance – Bearings and materials used in the Woltman have been tested and proven to have long life expectancy Compatibility – The Woltman is fitted with a Reed Switch sensor The unique measuring unit has only one moving element, the impeller, which is in contact with the water Transmission gear is kept in a hermetically sealed dry container 	

Woltman - Industrial Water Meter ISO

Dimensions						
Model WSTsb – Nominal Size	mm	50	65	80	100	150
	inches	2"	2½"	3"	4"	6"
Q4 Max. Flowrate (m ³ /h)		78.75	78.75	125	200	312.5
Q3 Nominal Flowrate (m ³ /h)		63	63	100	160	250
Q2 Transitional Flowrate (m ³ /h)		1.01	1.01	1.6	2.56	4
Q1 Minimum Flowrate (m ³ /h)		0.63	0.63	1	1.6	2.5
Starting Flow (m ³ /h)		0.15	0.15	0.25	0.3	0.8
Max. register capacity (m ³)		10 ⁶	10 ⁶	10 ⁶	10 ⁷ /10 ⁶	10 ⁷ /10 ⁶
R Value		100	100	100	100	100
Smallest readable unit (litre)		0.5	0.5	0.5	5	5
Accuracy between Q4 and Q2		±2%	±2%	±2%	±2%	±2%
Accuracy between Q2 and Q1		±5%	±5%	±5%	±5%	±5%

Flow Characteristics



Warranty

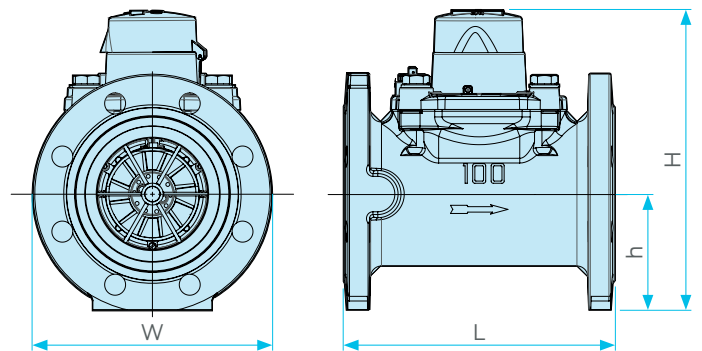
Reliance Worldwide Corporation (Aust.) Pty. Ltd. (RWC) will either replace or repair any defective goods where the defect arose as a result of manufacture within the warranty period. You may contact RWC at the phone number, address or e-mail shown below for further information or to make a claim.

Visit www.rmc.com.au/warranty to view the warranty statement in full and for further important information.

Dimensions

Nominal Size	mm	50	65	80	100	150
	inches	2"	2½"	3"	4"	6"
L – Length		200	200	230	250	300
W – Width		165	185	200	220	283
H – Height		239	254	259	275	344
h – Height		70	84	90	106	130
Weight		12.5	15	15.5	19	35.5

Note: All measurements in mm unless otherwise stated.
All weights are shown in kg unless otherwise stated.



Installation

Installation is subject to the requirements of the applicable regulatory authority, the National Construction Code Volume Three – Plumbing Code of Australia, associated reference standards as applicable at the time and AS/NZS 3500.1.

Please note: Approved Utility use only, this product is not WaterMark licenced.