

# Reed Switch Guide

Scope of Use / Specification Sheet

## Cold Water Multijet Meter 20mm to 40mm

The RWC Cold Water Multijet Meter, requires a Reed Switch (2 wires) to allow connection to an AMR system.



WM598

### Product Code

| Catalogue Number | Pulse Rate          |
|------------------|---------------------|
| WM598            | 1 pulse / 10 litres |

### Connection

|            |                             |
|------------|-----------------------------|
| White Wire | Common/Ground (always used) |
| Brown Wire | Return Line (normally used) |

### Warranty

Reliance Worldwide Corporation (Aust.) Pty. Ltd. (RWC) will either replace or repair any defective goods where the defect arose as a result of manufacture within the warranty period. You may contact RWC at the phone number, address or e-mail shown below for further information or to make a claim.

Visit [www.rmc.com.au/warranty](http://www.rmc.com.au/warranty) to view the warranty statement in full and for further important information.

### Switch Specification

|                          |         |
|--------------------------|---------|
| Maximum Switch Voltage   | 180V DC |
| Maximum Switched Current | 500mA   |
| Maximum Switched Power   | 10W     |

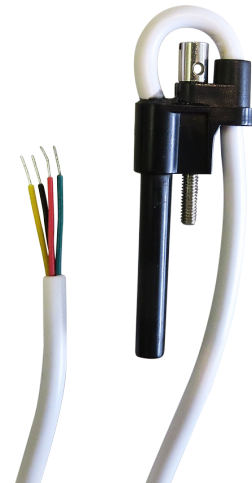
### Comments

The Cold Water Multijet Meter Reed Switch is inserted into the face of the meter. The Reed Switch normally connects to AMR systems using the White and Brown wires. They have no polarity.



## Cold Water PD Meter 15mm to 25mm

The RWC Cold Water PD Meter requires a Reed Switch (4 wires) to allow connection to an AMR system.



WMRS5

### Product Code

| Catalogue Number | Pulse Rate         |
|------------------|--------------------|
| WMRS5            | 1 pulse / 5 litres |

### Switch Specification

|                          |        |
|--------------------------|--------|
| Maximum Switch Voltage   | 30V DC |
| Maximum Switched Current | 50mA   |

### Connection

|             |                             |
|-------------|-----------------------------|
| Green Wire  | Common/Ground (always used) |
| Red Wire    | Return Line (normally used) |
| Black Wire  | Not Used                    |
| Yellow Wire | Not Used                    |

### Comments

The Cold Water PD Meter Reed Switch is inserted into the body of the meter. The Reed Switch normally connects to AMR systems using the Green and Red wires. They have no polarity.

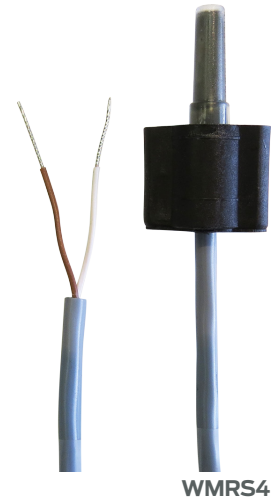
### Warranty

Reliance Worldwide Corporation (Aust.) Pty. Ltd. (RWC) will either replace or repair any defective goods where the defect arose as a result of manufacture within the warranty period. You may contact RWC at the phone number, address or e-mail shown below for further information or to make a claim.

Visit [www.rmc.com.au/warranty](http://www.rmc.com.au/warranty) to view the warranty statement in full and for further important information.

# Hot Water Multijet Meter 15mm to 50mm

The RWC Hot Water Multijet Meter requires a Reed Switch (2 wires) to allow connection to an AMR system.



| Product Code     |                     |
|------------------|---------------------|
| Catalogue Number | Pulse Rate          |
| WMRS4            | 1 pulse / 10 litres |

| Switch Specification     |        |
|--------------------------|--------|
| Maximum Switch Voltage   | 30V DC |
| Maximum Switched Current | 50mA   |

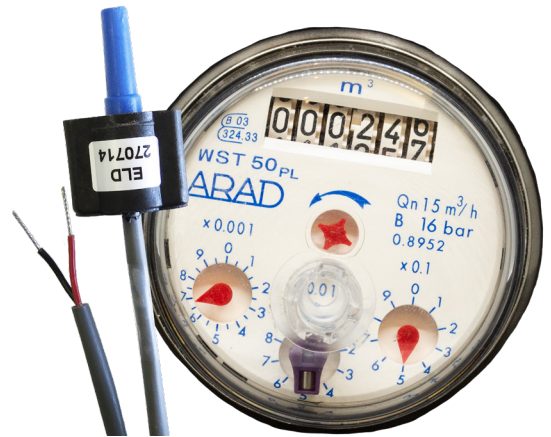
| Connection |                             |
|------------|-----------------------------|
| White Wire | Common/Ground (always used) |
| Brown Wire | Return Line (normally used) |

**Comments**  
The Hot Water Multijet Meter Reed Switch is inserted into the face of the meter. The Reed Switch normally connects to AMR systems using the White and Brown wires. They have no polarity.

**Warranty**  
Reliance Worldwide Corporation (Aust.) Pty. Ltd. (RWC) will either replace or repair any defective goods where the defect arose as a result of manufacture within the warranty period. You may contact RWC at the phone number, address or e-mail shown below for further information or to make a claim.  
Visit [www.rmc.com.au/warranty](http://www.rmc.com.au/warranty) to view the warranty statement in full and for further important information.

## Cold Water Woltman Meter 50mm to 200mm

The RWC Cold Water Woltman Meter requires a Pulse Counter and Reed Switch (2 wires) to allow connection to an AMR system.



WMSP011

### Product Code

| Catalogue Number | Size  | Pulse Rate            |
|------------------|-------|-----------------------|
| WMSP011          | 50mm  | 1 pulse / 10 litres   |
| WMSP014          | 65mm  | 1 pulse / 10 litres   |
| WMSP012          | 80mm  | 1 pulse / 10 litres   |
| WMSP013          | 100mm | 1 pulse / 10 litres   |
| WMSP004          | 150mm | 1 pulse / 1000 litres |
| WMSP005          | 200mm | 1 pulse / 1000 litres |

### Switch Specification

|                          |        |
|--------------------------|--------|
| Maximum Switch Voltage   | 30V DC |
| Maximum Switched Current | 50mA   |

### Connection

|            |                             |
|------------|-----------------------------|
| Black Wire | Common/Ground (always used) |
| Red Wire   | Return Line (normally used) |

### Comments

The Cold Water Woltman Meter is retrofitted with a pulse output register and clip in Reed Switch. The Reed Switch normally connects to AMR systems using the Black and Red wires. They have no polarity.

### Warranty

Reliance Worldwide Corporation (Aust.) Pty. Ltd. (RWC) will either replace or repair any defective goods where the defect arose as a result of manufacture within the warranty period. You may contact RWC at the phone number, address or e-mail shown below for further information or to make a claim.

Visit [www.rmc.com.au/warranty](http://www.rmc.com.au/warranty) to view the warranty statement in full and for further important information.