

# METER DIRT BOXES

**RMC** water valves

The Reliance Meter Dirt Boxes protect downstream lines from congestion from dirt and debris.

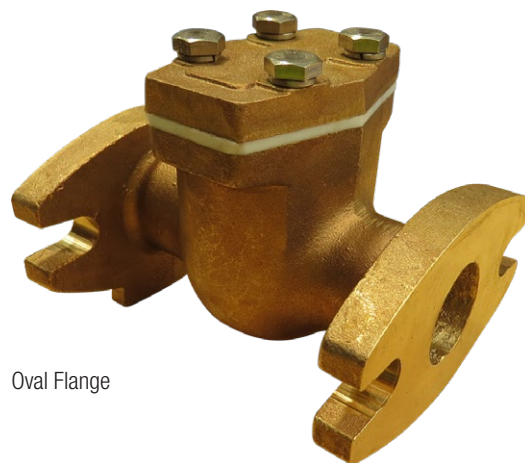
Model	Length	Catalogue Number
<b>Oval Flanges</b>		
32mm	135mm	1N108
40mm	120mm	1N109
<b>Round Flanges</b>		
50mm	200mm	1N114
80mm	225mm	1N111
100mm	250mm	1N112
150mm	300mm	1N113

## Description

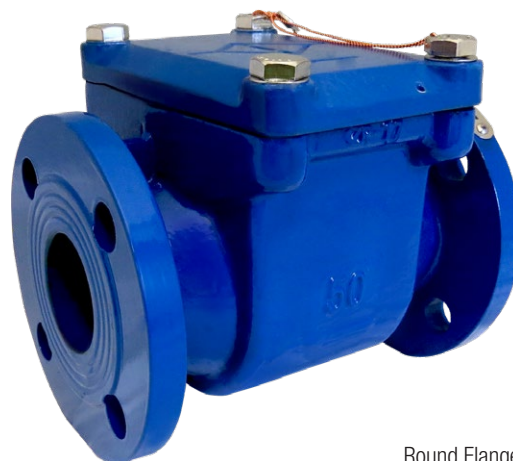
Large suspended particles and fibrous contamination in the water can impact the measuring characteristics of Woltman Meters and can deposit in the bearings. The dirt filter can guard against particles as small as 5mm from the water and reliably protect the meters that are downstream.

## Features and Benefits

- No contamination of the piping by particles
- Additional protection for a following water meter
- Easy to maintain through removable insert
- Operating pressure 16 bar
- Application for cold water up to 50°C
- Stainless Steel strainer

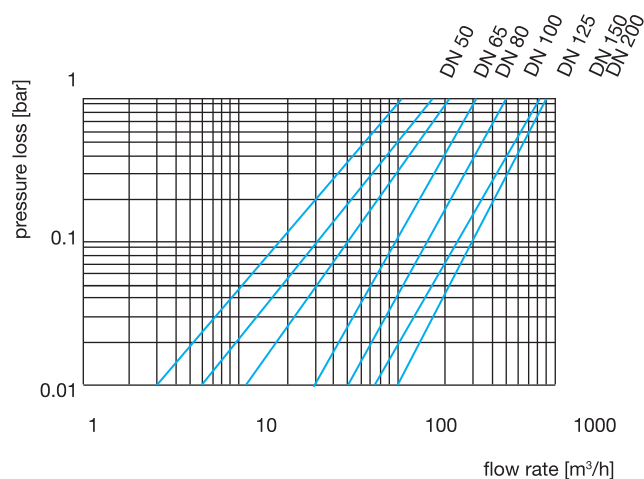


Oval Flange



Round Flange

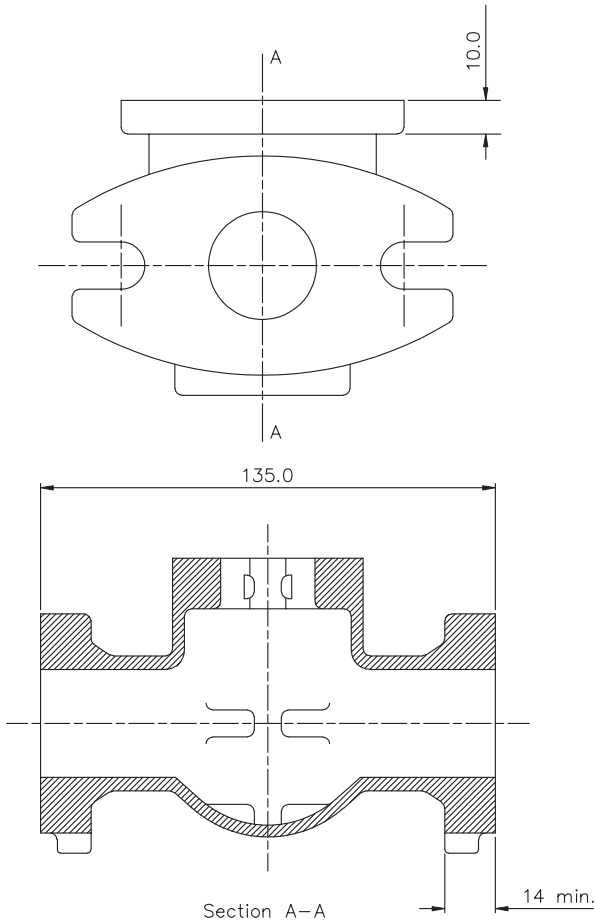
## Flow Characteristics



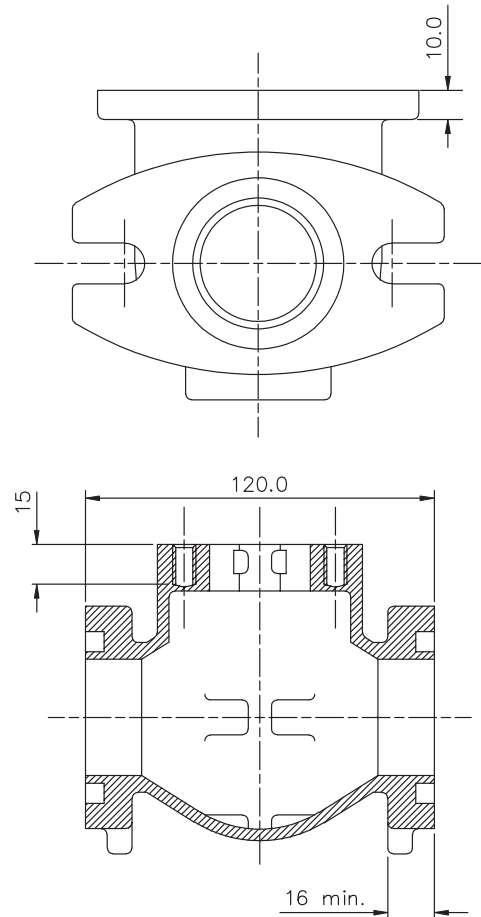
Uniquely Australian

## Dimensions (Oval Flange) All dimensions in millimetres unless otherwise stated

Strainer Body 32mm



Strainer Body 40mm



## Dimensions (Round Flange)

Dominal diameter	DN	50	80	100	150
Overall length	L	200	225	250	300
Height	H	176	224	234	277
Flange diameter	D	165	200	220	285
Bolt circle diameter	D1	125	160	180	240
Number of bolts		4	4	4	8
Bolt diameter		19	19	19	23
Weight		12	15	17	35

*All dimensions in millimetres unless otherwise stated*

