

ENDURANCE MULTIJET TURBINE METER

RMC water
valves

The Reliance Endurance Multijet Turbine Meter is of a robust design that ensures long term meter accuracy. The meter is pulse capable.



Model	Catalogue Number
32mm Oval Flange	WM322MRP
40mm Oval Flange	WM402MRP

* Reed Switch WM598 required for pulse output

Description

The RMC Water Valves Endurance Multijet Turbine Meter is available in 32mm to 40mm configurations. The meter features an extended service life due to its low friction mechanism and higher mechanical durability.

Application

The RMC Water Valves Endurance Multijet Turbine Water Meter is a water meter for indoor and outdoor use. The product is only certified to be installed in a horizontal orientation. The meter must be installed with the direction of the flow as indicated by the arrow cast in the meter body. For ease of servicing it is recommended an isolating valve be installed before the meter.

DO NOT use cold water meter in hot water pipeline.

Materials

Body/H Ring	Gunmetal
Reading Face	Polycarbonate
Counter Mechanism	Polystyrol
Check Valve	Acetal

Features and Benefits

- Reading face, including rollers, are encapsulated in protective silicon oil filled chamber
- Sealed roller prevents fogging and discolouration from trapped particulate in the metered water supply
- Low friction mechanism
- Higher mechanical durability and inherent resistance to choking as a result of large port clearances
- Long term meter accuracy is essential for maintaining charging equity
- Economical metering option
- Extended service life provides significant long term cost savings for water authorities
- Direct drive mechanism
- No magnetic coupling protects device from magnetic interference
- Internal non-return valve and strainer
- Protects from dirt and debris, as well as prevents reverse flow



Uniquely Australian

ENDURANCE MULTIJET TURBINE METER

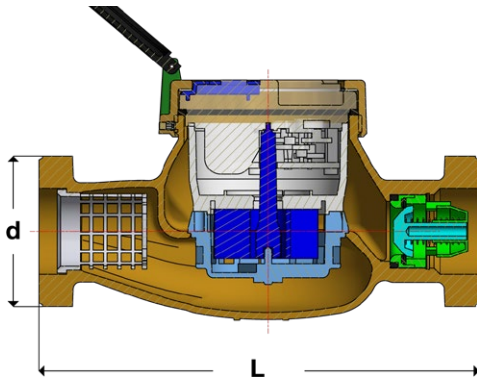


Performance Specifications

	DN32	DN40
Overload Flow Rate (Q4)	12.5 kL/h	20 kL/h
Permanent Flow Rate (Q3)	10 kL/h	12 kL/h
Transition Flow Rate (Q2)	100 L/h	160 L/h
Min. Flow Rate (Q1)	63 L/h	100 L/h
Min. Registration Flow Rate	7 L/h	7 L/h
Pressure Loss	24 kPa @ 5 kL/h	45 kPa @ 7.5 kL/h
Strainer	Total area: 2950 mm ² / Hole size: 2.0 x 2.0 mm	Total area: 5500 mm ² / Hole size: 3.0 x 1.5 mm
Accuracy	Q1 to Q2	±5%
	Q2 to Q4	±2%
Meter Type	Multijet	
Drive Type	Direct, not susceptible to magnetic interference	
Register Type	Roller-protected Counter / Maximum Reading: 99,999 kL / Minimum Reading: 0.05 L / Leak Detection: Wheel	
Indicator Type	Digital Indicators (Black) = kilolitres / Pointer Wheels (Red) = sub-multiples	
Pulse Output Option	1 pulse per 10 L	
End Connections	Oval flange to AS3565.1	
Max. Working Pressure	1400 kPa	
Integral Non-Return Valve	Yes	
Max. Working Temperature (AS3565.1)	30°C	
Max. Operating Temperature (AS3565.1)	50°C	

Dimensions

	DN32	DN40
Nominal Diameter	DN32	DN40
Body Thread	Oval Flange	
Body Length in mm (L)	190	232
Connector Thread (d)	R1¼	R1½
Width in mm	115	115
Weight in kg (without connectors)	2.7	4.0
Weight in kg (with connectors)	4.3	5.7



Flow Characteristics

